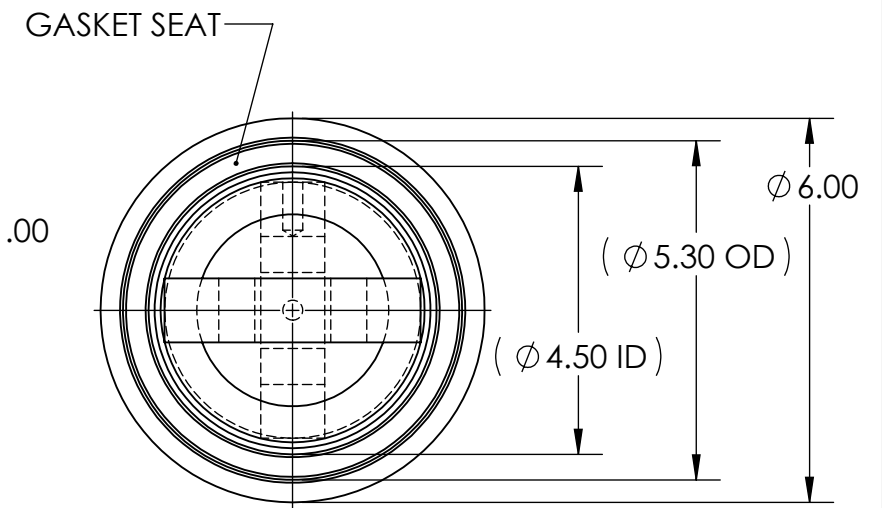
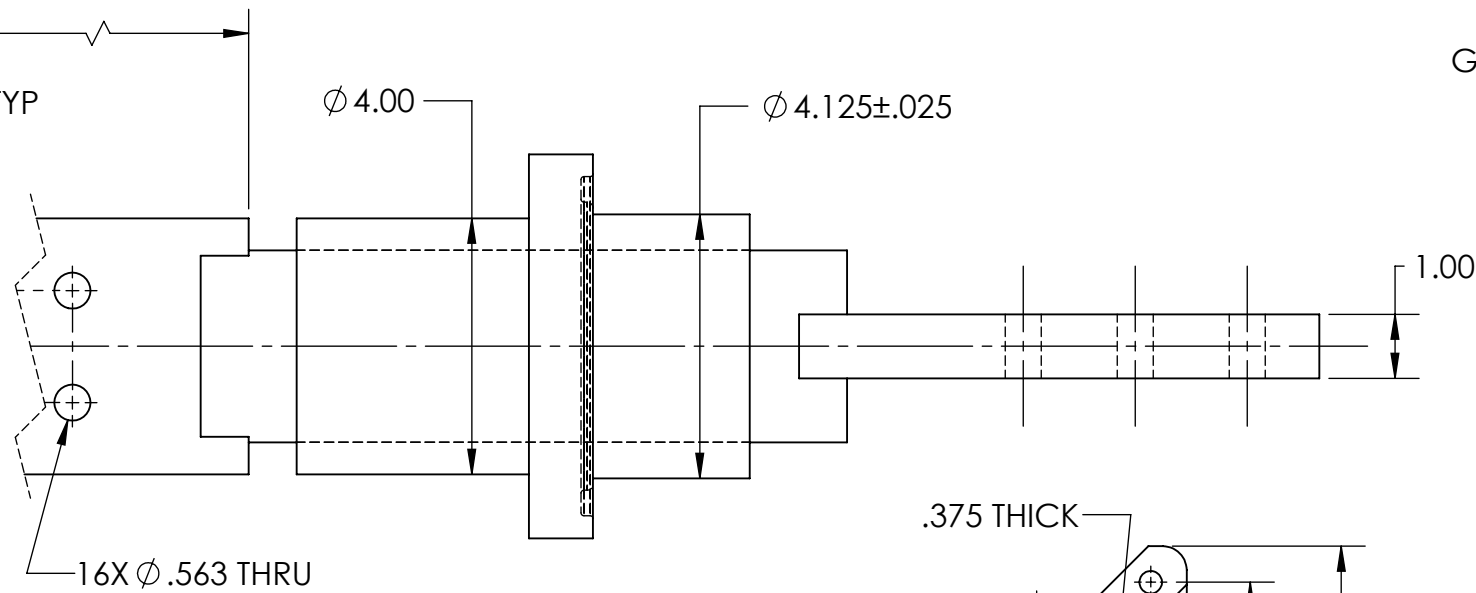
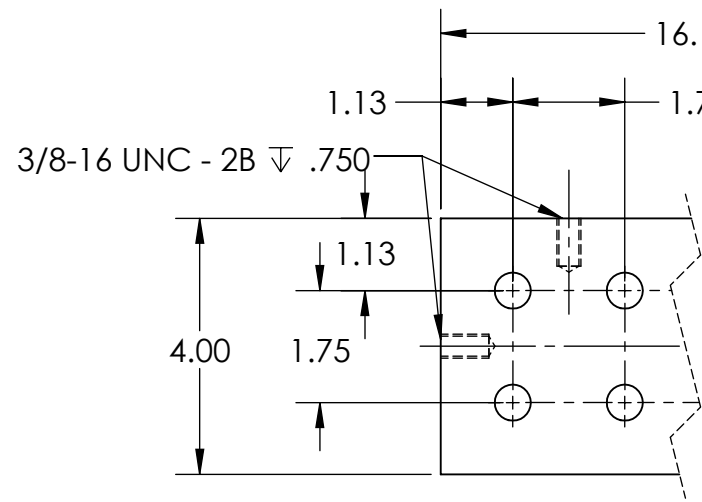
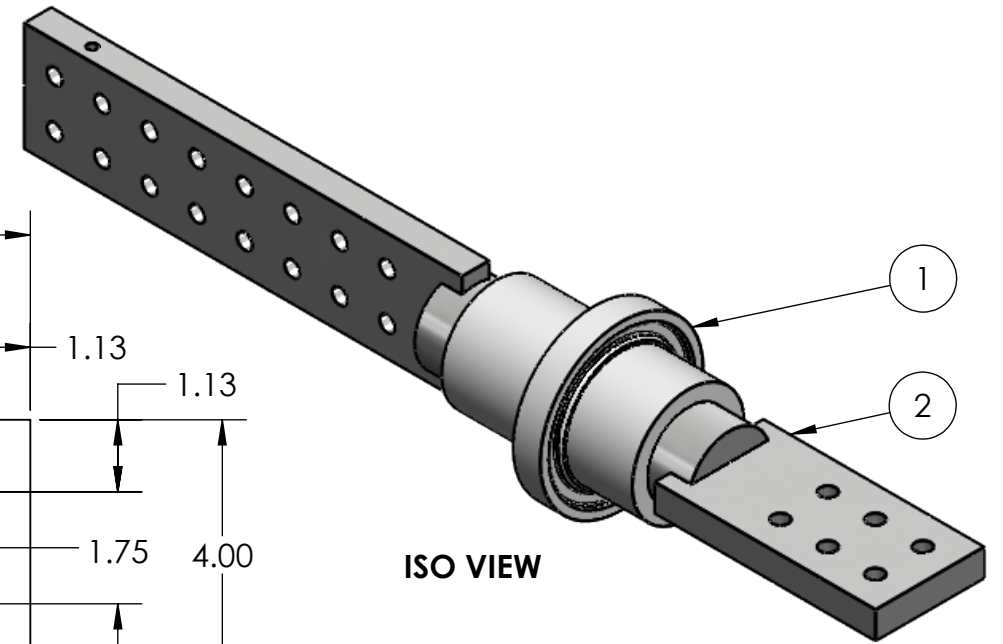
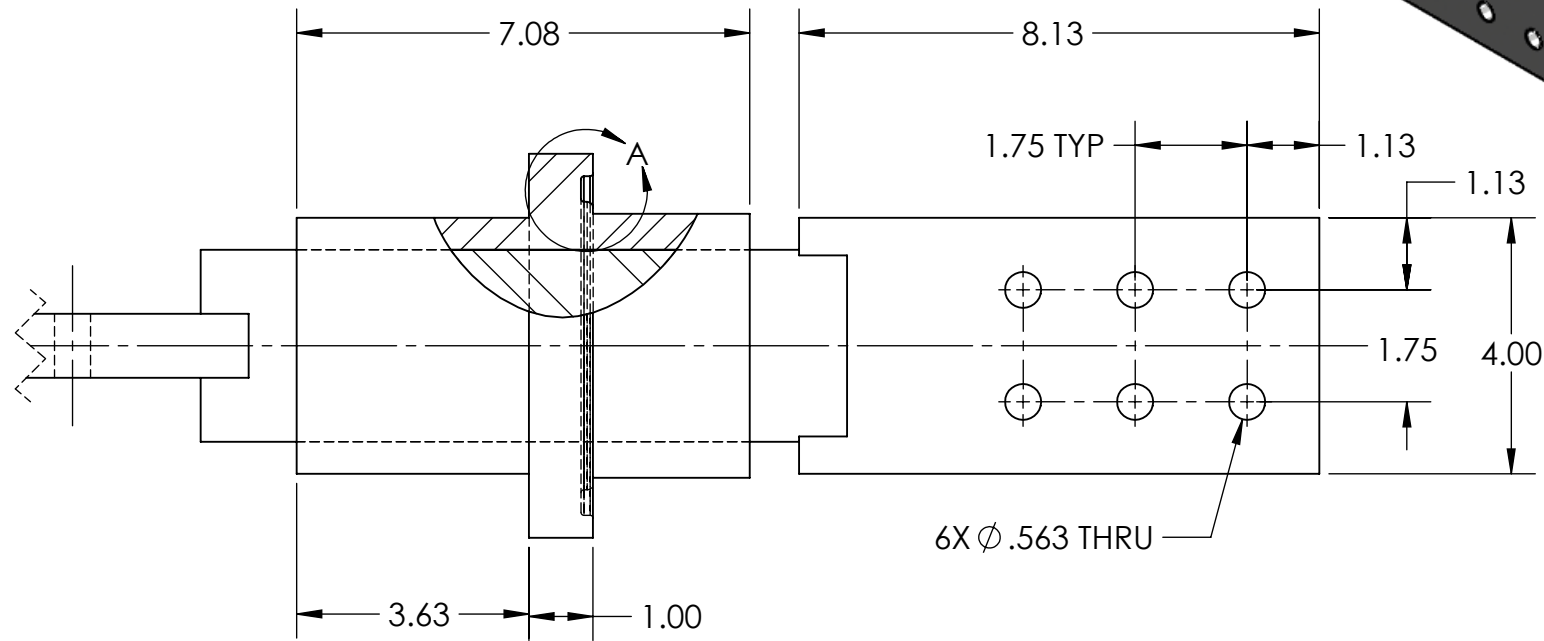
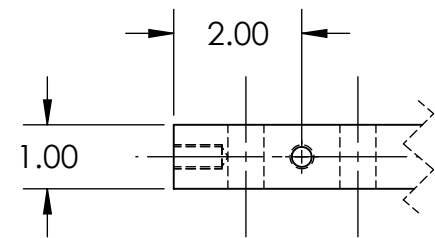
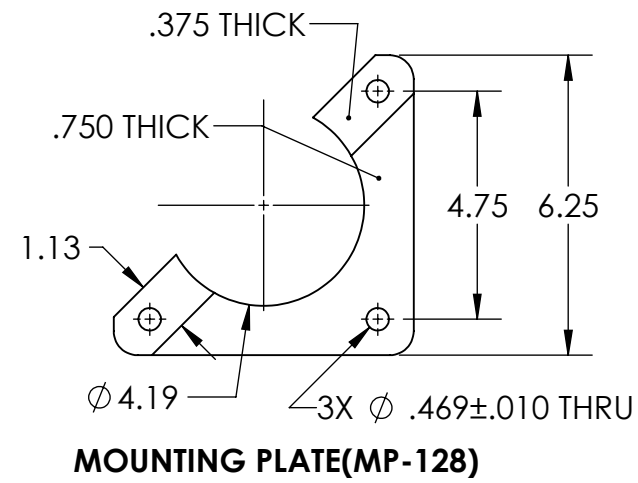
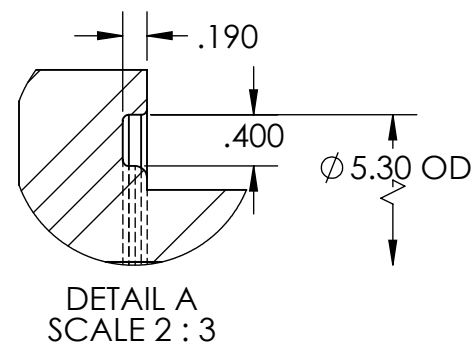


ITEM NO.	PART NUMBER	DESCRIPTION	QTY.
1	90-414	INDOOR EPOXY	1
2	CU-438	COPPER CONDUCTOR	1



SPECIFICATIONS	
CURRENT RATE	6500 A
VOLTAGE CLASS	2.5 kV
B.I.L.	4.5 kV
TANK OPENING	4.18" MIN
PLATING	TIN
GASKET	AC86-265
MOUNTING PLATE	MP-128



UNLESS OTHERWISE SPECIFIED:
 DIMENSIONS ARE IN INCHES
 TOLERANCES:
 ANGULAR: ±0.5°
 TWO PLACE DECIMAL ±0.05
 THREE PLACE DECIMAL ±0.005
 THIRD ANGLE PROJECTION

CROSSLINK TECHNOLOGY INC.			
TITLE: LV BUSHING			
SIZE B	DWG. NO. 90-414	REV 1	
DATE: 26JUL2023	BY: R.W	APPD: A.S	SCALE: 1:3 SHEET 2 OF 2