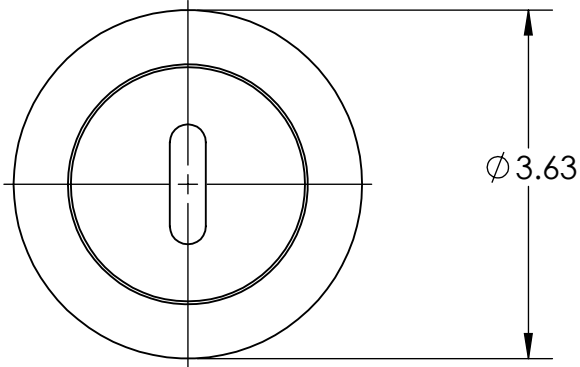
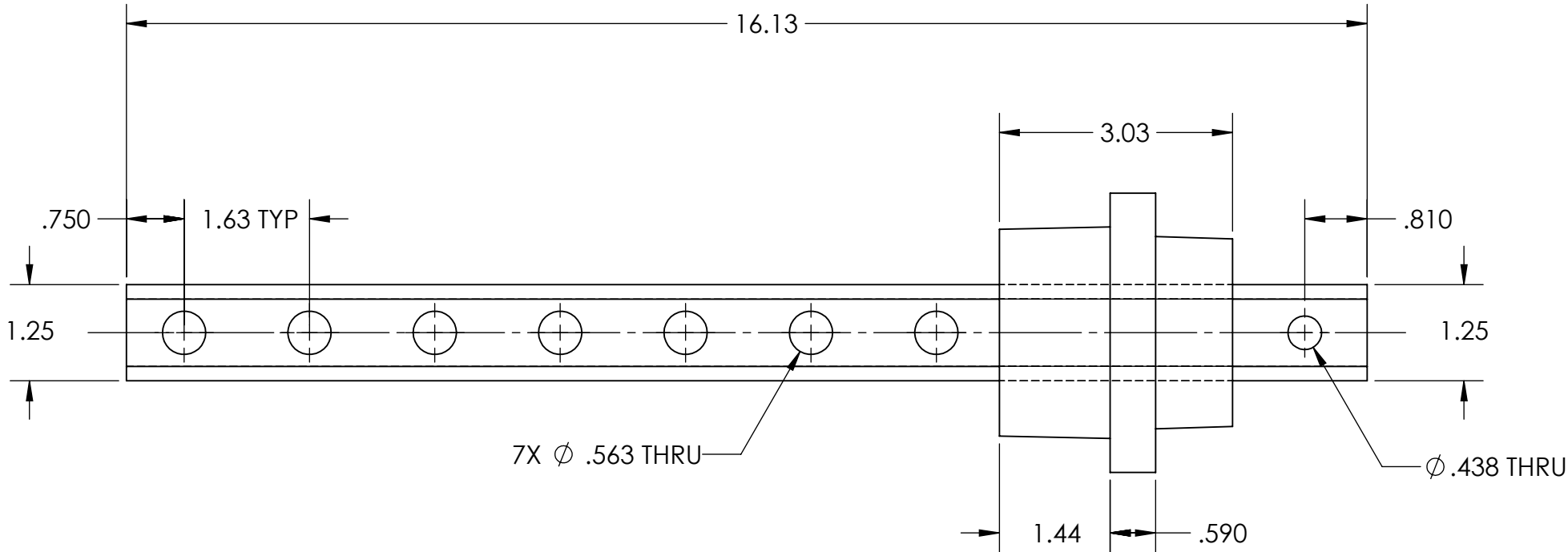
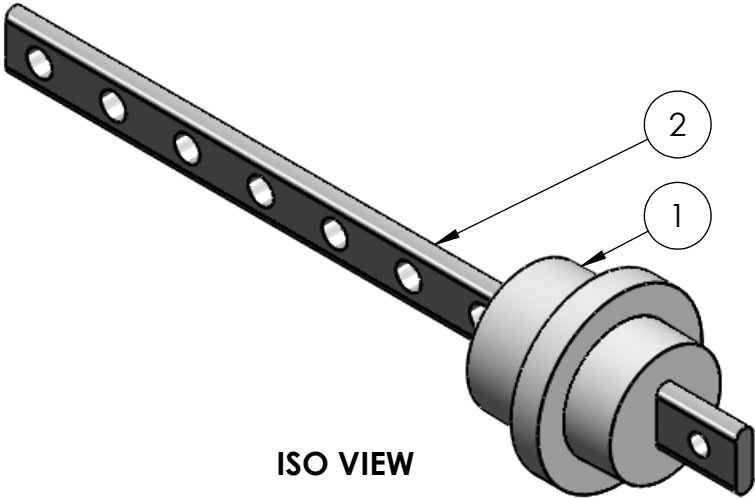
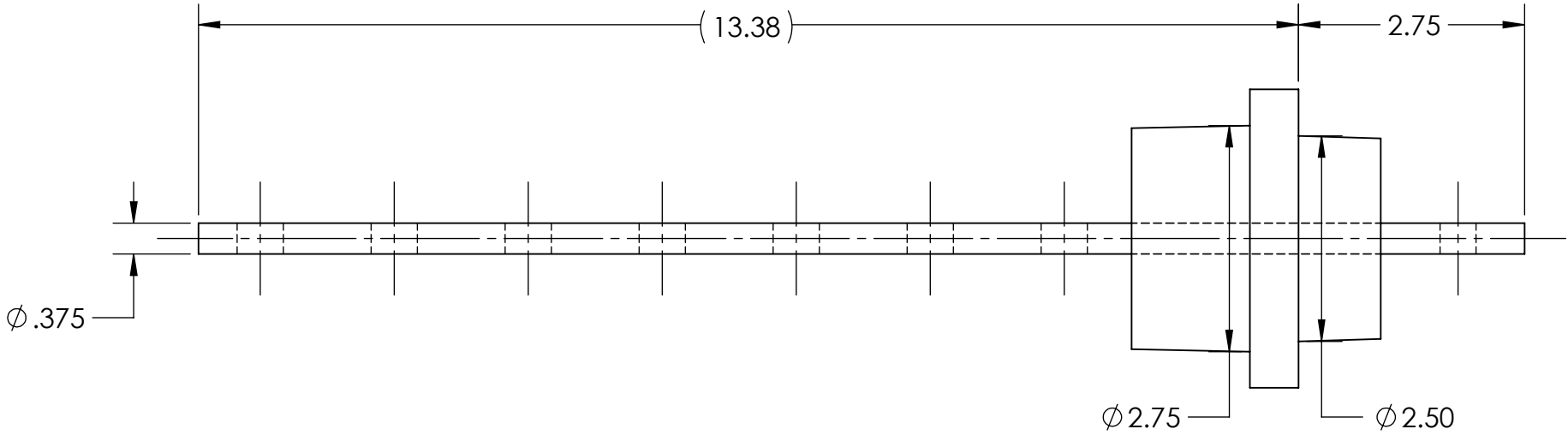



ITEM NO.	PART NUMBER	DESCRIPTION	QTY.
1	85-275	INDOOR EPOXY	1
2	CU-110	COPPER CONDUCTOR	1



SPECIFICATIONS	
CURRENT RATE	600 A
VOLTAGE CLASS	1.2 kV
B.I.L.	30 kV
TANK OPENING	2.56" MIN
PLATING	TIN

UNLESS OTHERWISE SPECIFIED: DIMENSIONS ARE IN INCHES TOLERANCES: ANGULAR: $\pm 0.5^\circ$ TWO PLACE DECIMAL $\pm 0.05$ THREE PLACE DECIMAL $\pm 0.005$ THIRD ANGLE PROJECTION		CROSSLINK TECHNOLOGY INC. 	
PROPRIETARY TECHNICAL INFORMATION TO BE MAINTAINED IN CONFIDENCE AND NOT DISCLOSED TO ANY THIRD PARTY.		TITLE: <b>LV BUSHING</b>	
SIZE <b>B</b>	DWG. NO. <b>85-275</b>	REV <b>1</b>	
DATE: 31 AUG 2023	BY: R.W.	APPD: A.S.	SCALE: 1:2
SHEET 2 OF 2			